

# New York State Snowmobile Trails and Trip Planner



HOME | PREMIUM ACCOUNT | PHONE APPS | GPS TRAILSETS | TRAIL DATA | LOG OUT [rockwoo@twcny.rr.com](mailto:rockwoo@twcny.rr.com)

Display information for businesses, parking, clubhouses, trails and junctions by clicking on the info tool then on the map symbol. Please [report](#) any trail inaccuracies. Thank you.

MOVE AROUND THE MAP [HELP](#)

VIDEO

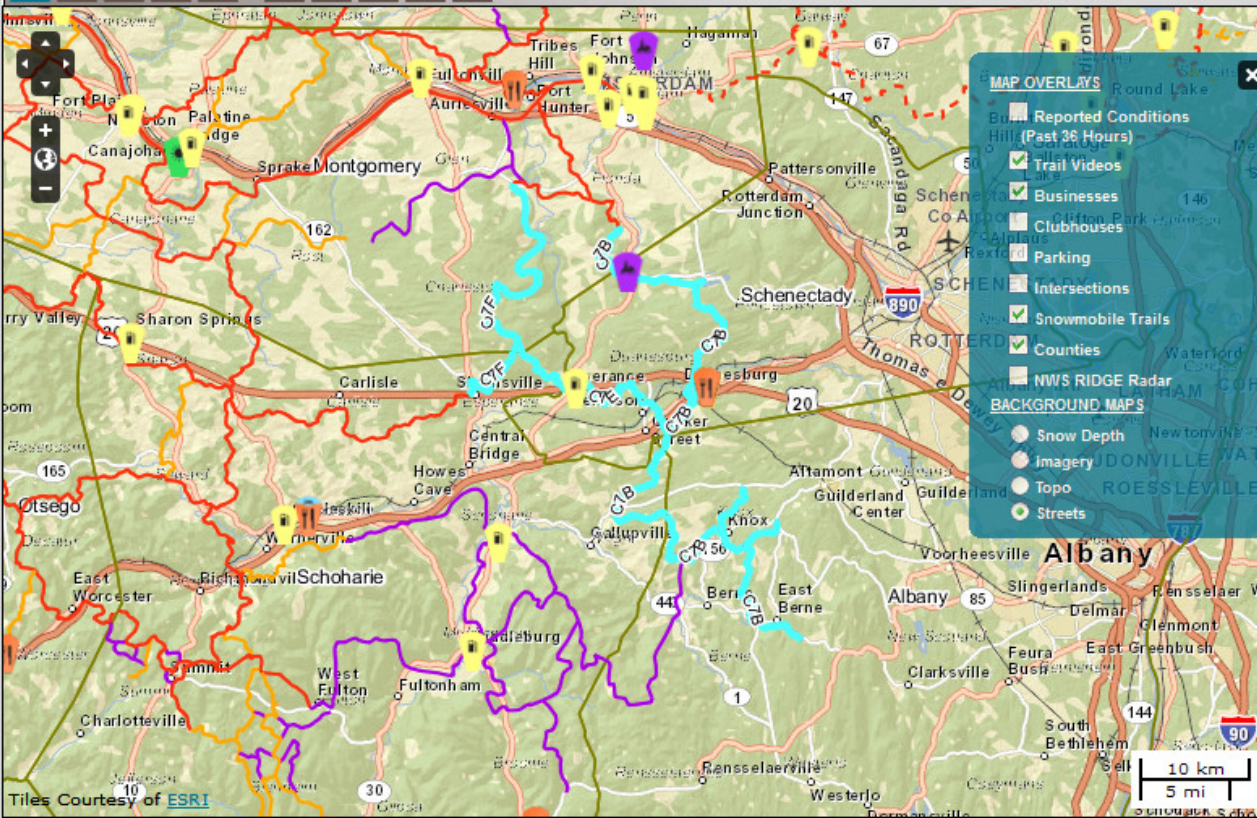
TRAILS

- SF Corridor
- SF Secondary

CONDITIONS

- Excellent
- Good
- Poor

- Old Forge/Inlet Permitted Trails
- Local club trail
- Nonparticipating club Corridor/Secondary



MAP OVERLAYS

- Reported Conditions (Past 36 Hours)
- Trail Videos
- Businesses
- Clubhouses
- Parking
- Intersections
- Snowmobile Trails
- Counties
- NWS RIDGE Radar

BACKGROUND MAPS

- Snow Depth
- Imagery
- Topo
- Streets

[HELP](#)

FIND TRAILS

**Quick Zooms**  
 Select a County

**By Club Name**  
 Frontier Sno Riders

**By Corridor Trail ID**  
 All Corridor Trails

FIND LODGING, DINING DEALERS AND MORE

**Filter By Category and Town**

All Categories

All Towns

**Filter By Lodging Subcategory**

All Subcategories

All Towns

**By Name (starting with)**  
 Find / Clear

**By Keyword (word or phrase)**  
 Find / Clear

**Search Near a Junction**

Select A Category

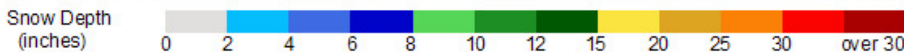
within  miles of

Select Junction  Find / Clear

LATEST NEWS

Pan Coordinates: -75.63369, 44.68223 Scale = 1 : 433K

The National Oceanic and Atmospheric Administration (NOAA) posts snow depth data on a daily basis, typically at either 6 am or 2 pm. We grab this data at 5:30 pm each day, reformat, then display it. The snow depth you are viewing is from yesterday.



FEEDBACK: [Click here](#) to report problems or offer suggestions. Thanks. Copyright (C) [Mohawk Valley GIS](#) 2013. All rights reserved.